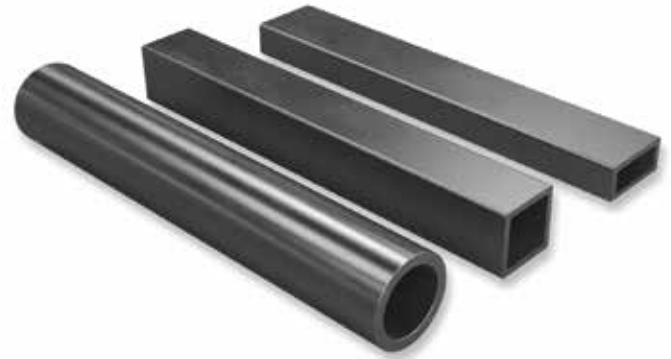




High strength hot finished hollow sections suitable for all construction and mechanical applications.

**HOT 355** is suitable for all internal and external applications to BS5950-1:2000, EN1993 and BS5400.

**HOT 355** hollow sections are supplied with a minimum yield strength of 355 N/mm<sup>2</sup> and comply fully with the European Standard for hot finished structural hollow sections, EN10210: S355J2H.



### INSPECTION AND TESTING

**HOT 355** hollow sections EN10210: S355J2H are subject to specific inspection and testing and are supplied with an inspection certificate type 3.1 to EN10204.

### DESIGNATION

**HOT 355** hollow sections are designated by their product name, outside dimensions and thickness in millimetres.

### DUAL CERTIFIED TO CE AND UKCA

All **HOT 355** material is CE marked and is fully compliant with the Construction Products Directive.

**HOT 355** is produced from fully-killed steel – critical to formability and weldability.

### EXAMPLES

Circular hollow section:

**HOT 355 114.3 x 6.3**

or **114.3 x 6.3 CHS EN10210: Part 1: S355J2H**

Rectangular hollow section:

**HOT 355 100 x 50 x 5.0**

or **100x50x 5.0 RHS EN10210:Part 1: S355J2H**

or simply

**HOT 355 EHS 400 x 200 x 8.0**

## CHEMICAL COMPOSITION AND MECHANICAL PROPERTIES

Yield strength R <sub>eh</sub> min N/mm <sup>2</sup>	Tensile strength R <sub>m</sub> N/mm <sup>2</sup>		Elongation % min L <sub>0</sub> = 5,65 √S <sub>0</sub> specimen	Impact strength 10mm x 10mm °Cm J	Chemical composition % max					Carbon equivalent (CEV) max
	T ≤ 16mm	3mm < T ≤ 100mm			C	Si	Mn	P	S	
355	510-680	470-630	22	-20 27	0.22	0.55	1.60	0.030	0.030	0.45



## DIMENSIONAL TOLERANCES EN10210: PART 2

	Circular	Square/Rectangular
Outside dimension (D B and H)	±1% with a min of ±0.5mm and maximum of ±10mm	±1% with a min of ±0.5mm
Thickness (T)	-10% Note: Positive deviation limited by mass tolerance	-10% Note: Positive deviation limited by mass tolerance
Squareness of side	-	90° ± 1°
External corner profile	-	3T max at each corner
Concavity/convexity (x)	-	±1% of the side, measured independently of the tolerance on the outside dimension
Twist (V)	-	2mm plus 0.5mm/m max Section is placed on a flat surface with one end held flat. At the other end the height difference of the two lower corners is taken.
Mass (M)	±6% on individual lengths	±6% on individual lengths
Straightness	Maximum 0.2% of the total length & 3mm over every 1 meter length	Maximum 0.2% of the total length & 3mm over every 1 meter length
Length	+150mm/-0mm	+150mm/-0mm

### Disclaimer:

This Data is indicative only and as such is not to be relied upon in place of the full specification. In particular, mechanical property requirements vary widely with temper, product and product dimensions. All information is based on our present knowledge and is given in good faith. No liability will be accepted by the Company in respect of any action taken by any third party in reliance thereon.

The information provided in this datasheet has been drawn from various recognised sources, including EN Standards, recognised industry references (printed & online) and manufacturers' data. No guarantee is given that the information is from the latest issue of those sources or about the accuracy of those sources.


Material supplied by the Company may vary significantly from this data, but will conform to all relevant and applicable standards.

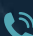
As the products detailed may be used for a wide variety of purposes and as the Company has no control over their use, the Company specifically excludes all conditions or warranties expressed or implied by statute or otherwise as to dimensions, properties and/or fitness for any particular purpose, whether expressed or implied.


Advice given by the Company to any third party is given for that party's assistance only and without liability on the part of the Company. All transactions are subject to the Company's current Conditions of Sale. The extent of the Company's liabilities to any customer is clearly set out in those Conditions; a copy of which is available on request.



For more information, please contact our sales team:

 **The Alternative Steel Company Ltd.**  
Wigan Service Centre  
Dobson Park Way  
Ince  
Wigan  
WN2 2DY

 Sales: +44 (0)1942 826 677

 [sales@alternativesteel.com](mailto:sales@alternativesteel.com)